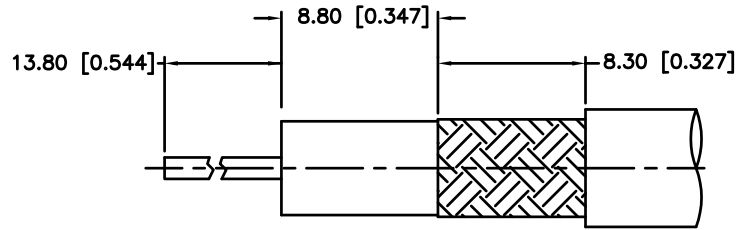
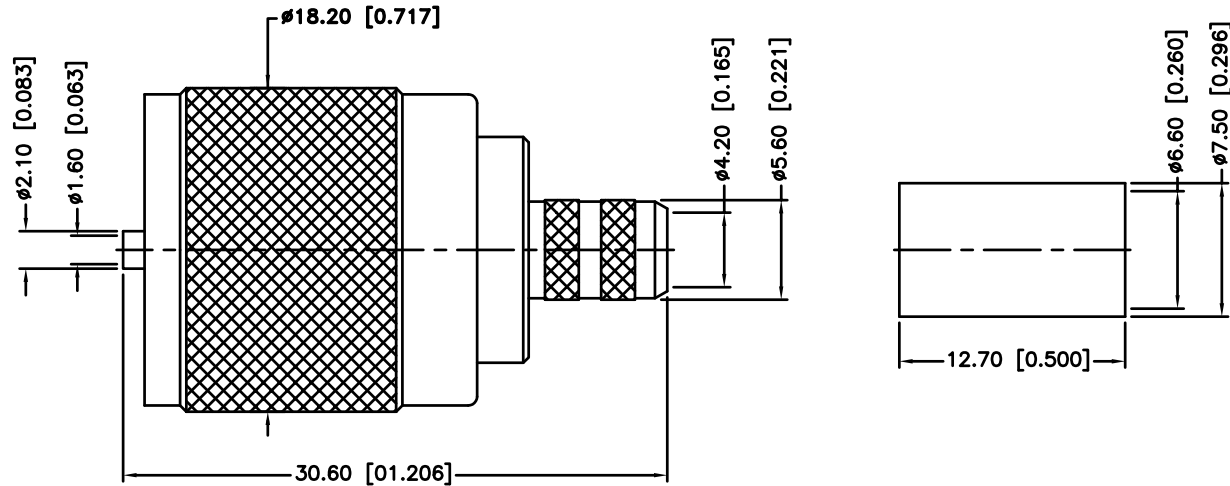


REV.	DATE	ECR NO	DESCRIPTION
A	07/16/10	---	RELEASE TO MFG.



RECOMMENDED CABLE
STRIPPING DIM'S



8				
7				
6				
5				
4	FERRULE	COPPER	NICKEL	1
3	CONTACT PIN	BRASS	SILVER	1
2	INSULATOR	PTFE	NATURAL	1
1	BODY	BRASS	SILVER	1
	DESCRIPTION	MATERIAL	FINISH	QTY

UNLESS OTHERWISE SPECIFIED DIMENSIONS ARE IN MILLIMETERS. DIMENSIONS IN [] ARE IN INCHES AND FOR CUSTOMER REFERENCE ONLY.

UNLESS OTHERWISE SPECIFIED TOLERANCES FOR MILLIMETERS ARE:
0.5 - 8mm ± 0.20mm
8 - 30mm ± 0.40mm
30 - 120mm ± 0.50mm

UNLESS OTHERWISE SPECIFIED TOLERANCES FOR INCHES ARE:
.020 - .315 = ± 0.007"
.315 - 1.180 = ± 0.015"
1.180 - 4.724 = ± 0.020"

DO NOT SCALE DRAWING

APPROVALS	DATE
DRAWN CLEMENT	07/16/10
CHECKED	
ISSUED	
SHEET 1 OF 1	
CAD FILE C:/182/182115-10.DWG	

<h1>Amphenol Connex</h1>			
PART DESCRIPTION UHF CRIMP PLUG-SILVER CENTER CONTACT (FOR 8X, LMR 240 CABLE)			
PART NO. 182115-10			
DWG. NO.	182115-10.DWG	REV. A	SIZE A
			SCALE NA